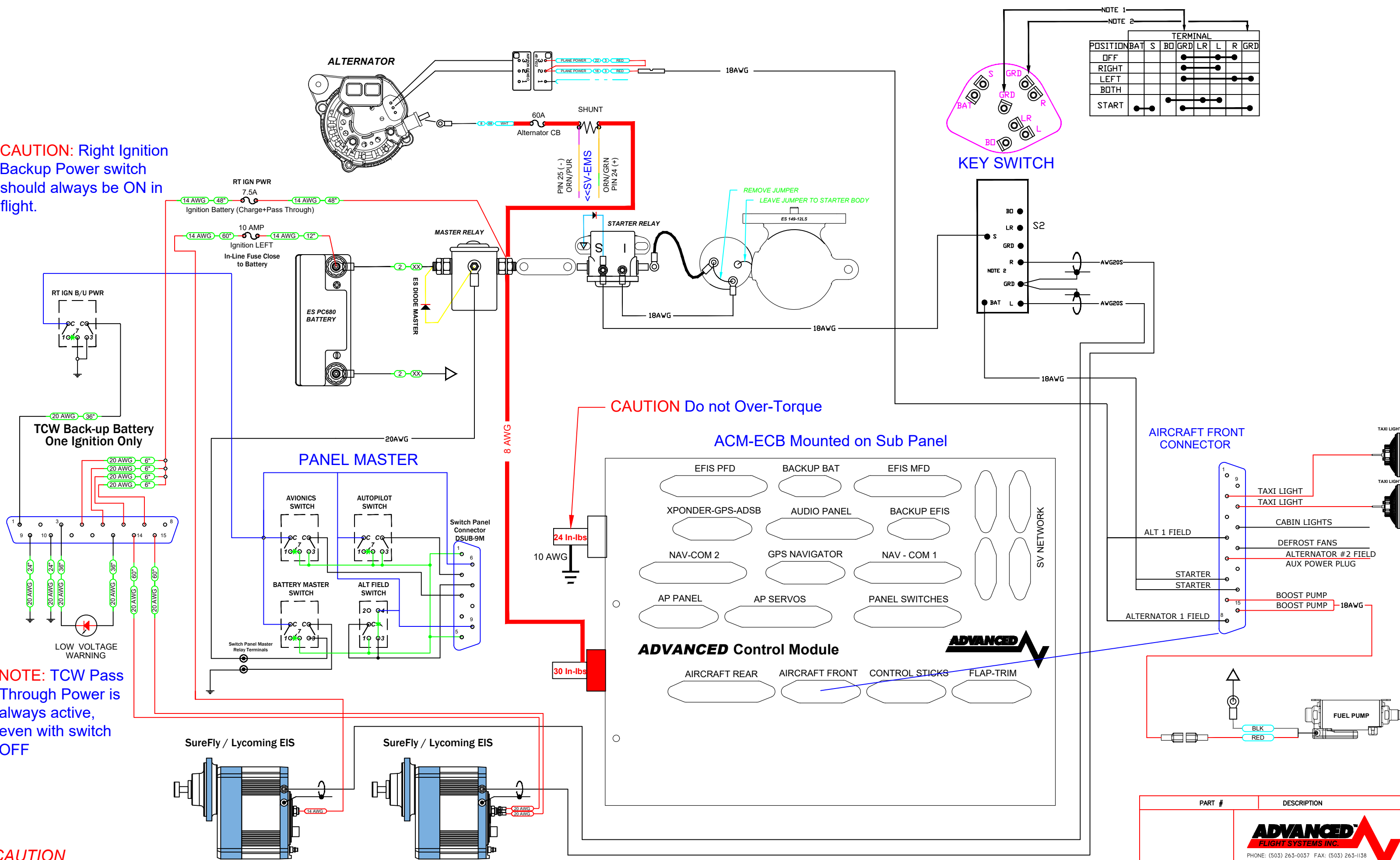


CAUTION: Right Ignition Backup Power switch should always be ON in flight.

NOTE: TCW Pass Through Power is always active, even with switch OFF

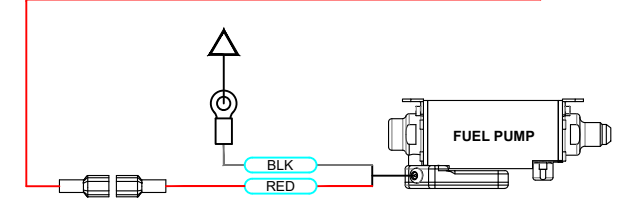
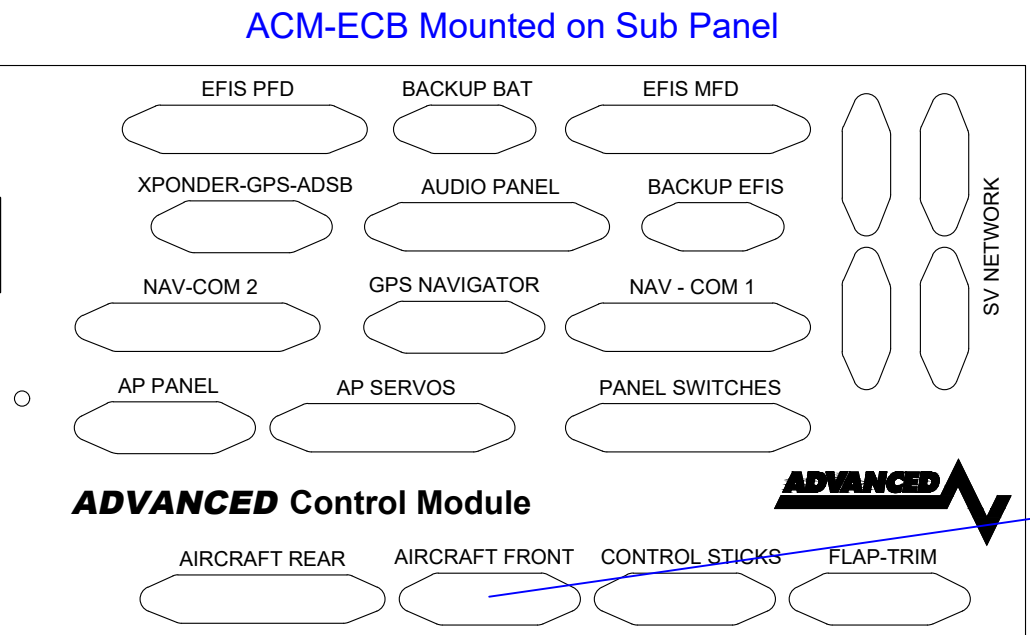
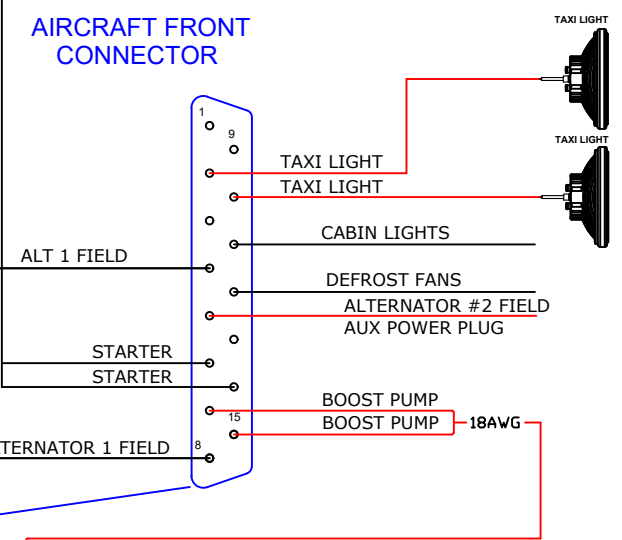
CAUTION
This drawing is provided for reference only ! Use the latest manuals and drawings from TCW and SureFly/Lycoming for wiring connections, wire sizes and circuit protection requirements.



NOTE 1
NOTE 2

POSITION	BAT	S	BD	GRD	LR	L	R	GRD
OFF								
RIGHT								
LEFT								
BOTH								
START								

CAUTION Do not Over-Torque



PART #	DESCRIPTION
	ADVANCED FLIGHT SYSTEMS INC.
	PHONE: (503) 263-0037 FAX: (503) 263-1138
	320 REDWOOD ST
	CANBY, OR 97013

REV	DATE	DESCRIPTION	REV BY
6	9/24/24	Added wire gauge	RJH
3	3/24/22	Moved TCW to Right MAG	RJH

DATE	SCALE	TITLE	P/N	REV.
3/21/22	NONE	SureFly - Lycoming EIS	57840-SF	6