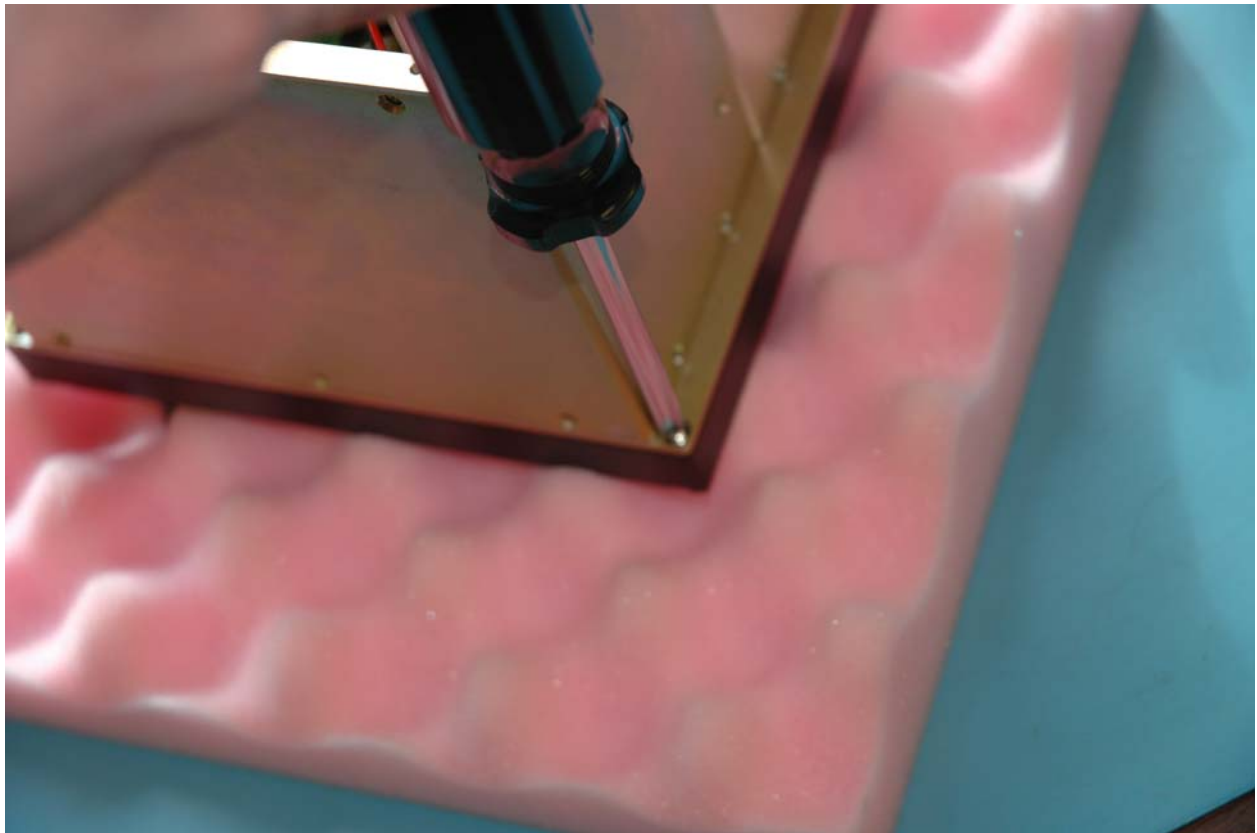
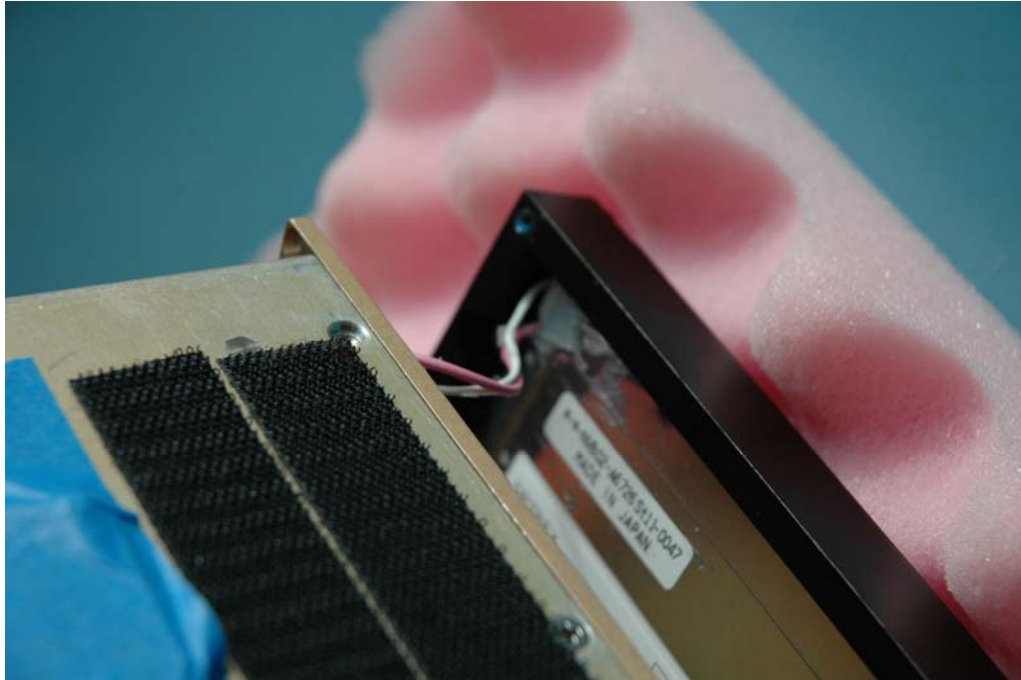


Screen Cable Check

This document is intended to check if the screen cable is seated correctly in the connector.



Put unit screen side down onto foam pad. Remove four corner screws as shown above. Rear case assembly will pull off screen bezel.



Silicon may be holding white and pink wires keeping the rear assembly from pulling away from screen. If this is the case, gently hold onto wires and pull rear assembly away from bezel 1". Gently press on the black connector on the back of the screen to verify it is fully seated.

Plug the black button board cable into its connector and press Button 1 to power the unit on internal batteries. See if problem has been fixed. If it has not, power

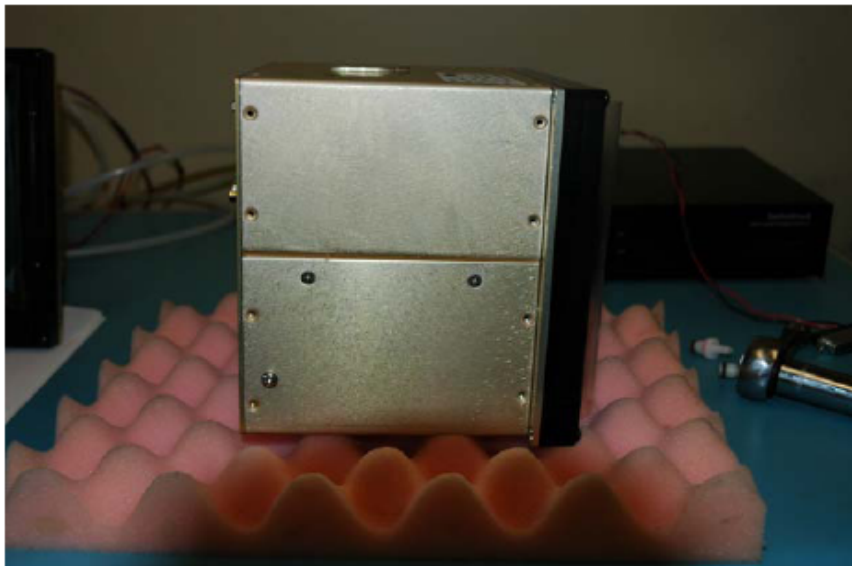


down the unit by pressing button 2.

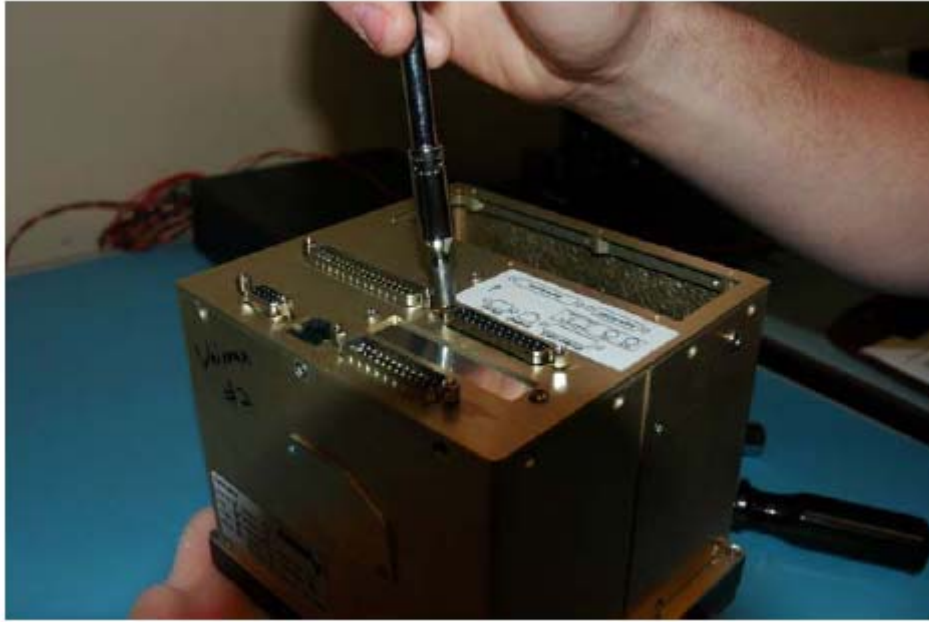
Replace rear assembly in reverse order careful not to pinch any wires between assemblies. Use loctite or thread locker on rear corner screws.



Start removing case screws

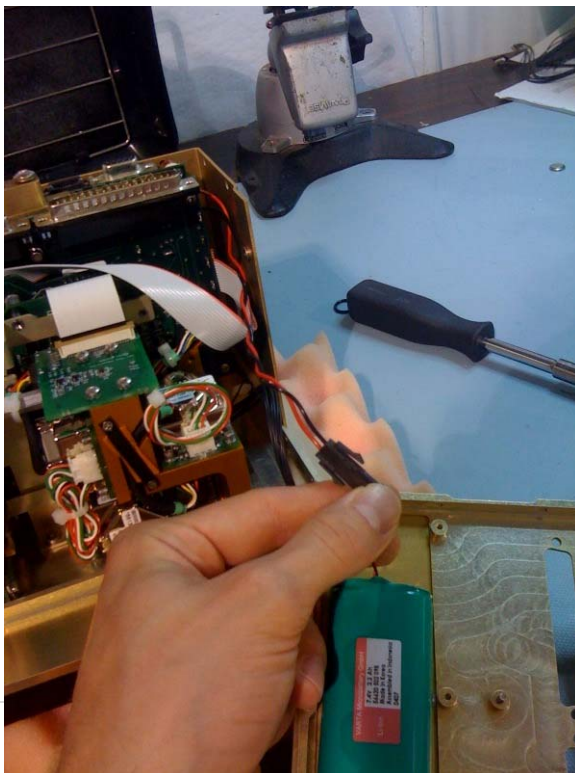


Remove all screws that hold the rear cover. 10 from the left and right side and 6 screws on the bottom and top.

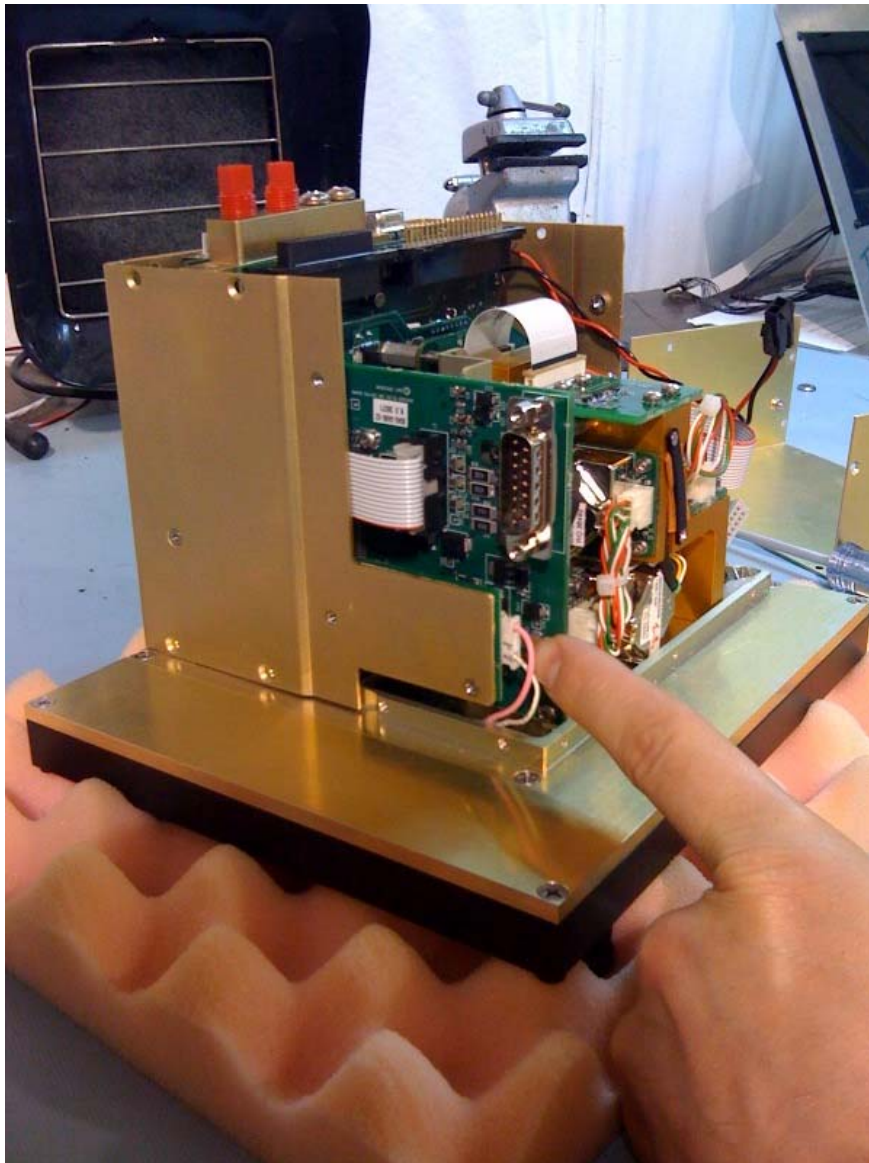


Remove DSUB jack screws

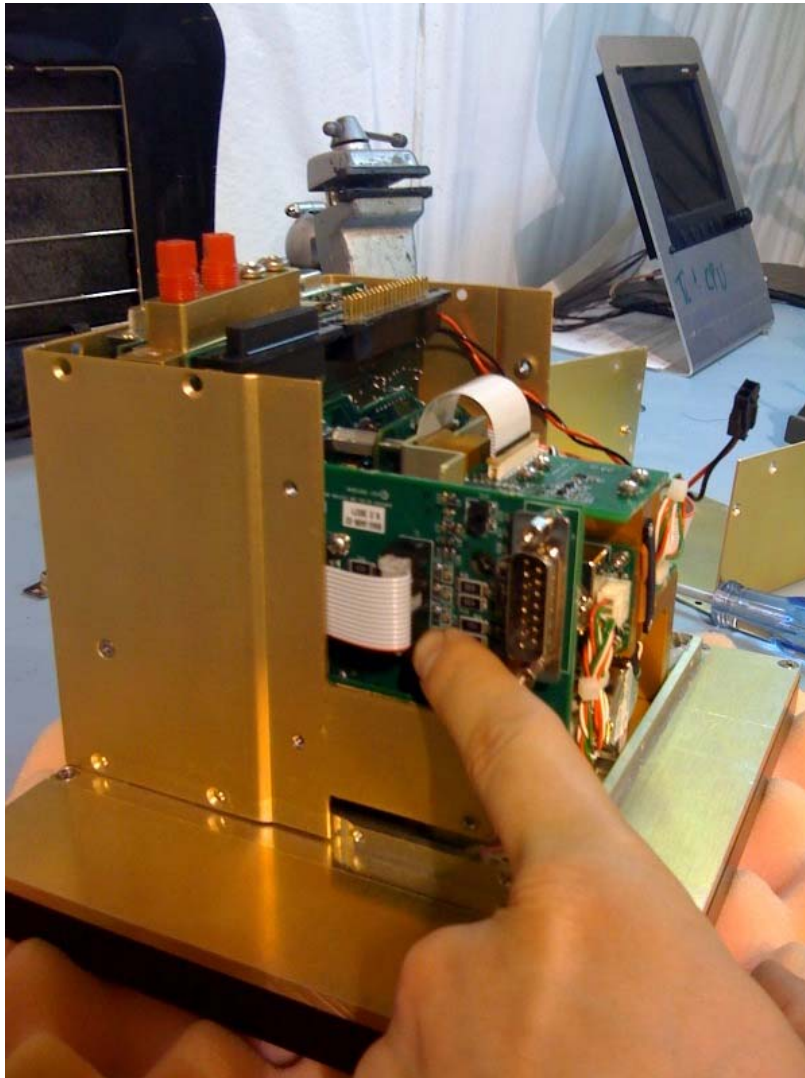
If your unit contains airdata you will need to remove two screws on both sides of the pitot/static block. You should be able to remove the back cover. Disconnect the battery. Press a clip in on the connector to do so. Now, remove the lower case.



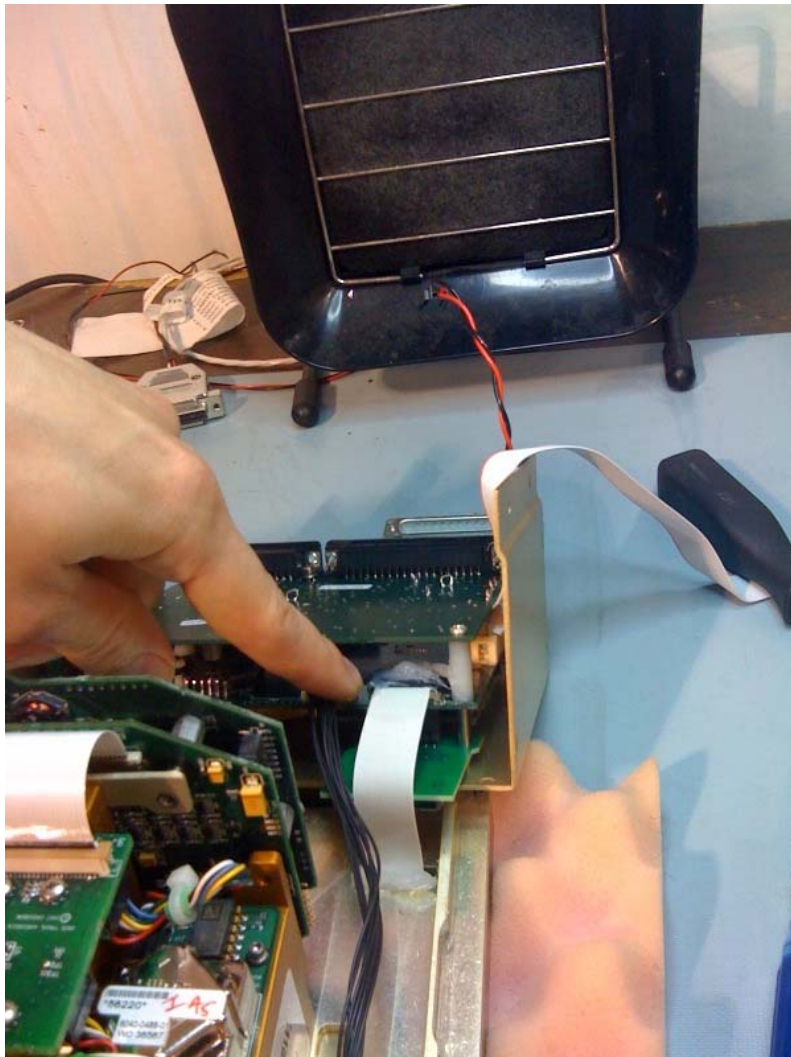
Pull straight out on the connector as shown below. When assembling, this connector is keyed and will only go in one way.



Next remove the 14 conductor cable plugged into the AHRS as shown below. When assembling, this cable's connector is marked with a triangle and should be matched up with the triangle on the AHRS connector. In the picture the red conductor is towards the screen and the cable comes back over the connector.



Pull straight up on the top cover assembly and lay it on the table. The LCD connector is shown in the picture below.



Verify it is seated firmly by applying gentle pressure across it. If you feel that you were able to press it down further, remove the silicon holding the connector to the board as it was not effective. Apply additional silicon across the top surface and on both sides of the board.

Reassemble the unit in the reverse order. Email if you have any questions.